

PROJECT BACKGROUND

In recent decades Darley has become a major suburban area of Bacchus Marsh, requiring ongoing development of open space assets to provide enhanced recreational opportunities.

Moorabool Shire has identified this reserve as a target for investment in upgraded public amenity. It is planned that landscaping works will be undertaken over a number of years, subject to funding.

Walkway

Narrow walkways such as this are a feature of the urban design of this neighborhood.

Often bare and neglected, this one has been extensively planted and maintained by civic-minded neighbors. Requires some management to ensure vegetation does not reduce public safety (hiding places).

Asphalt path is broken and unsafe due to damage by tree roots

Tree planting

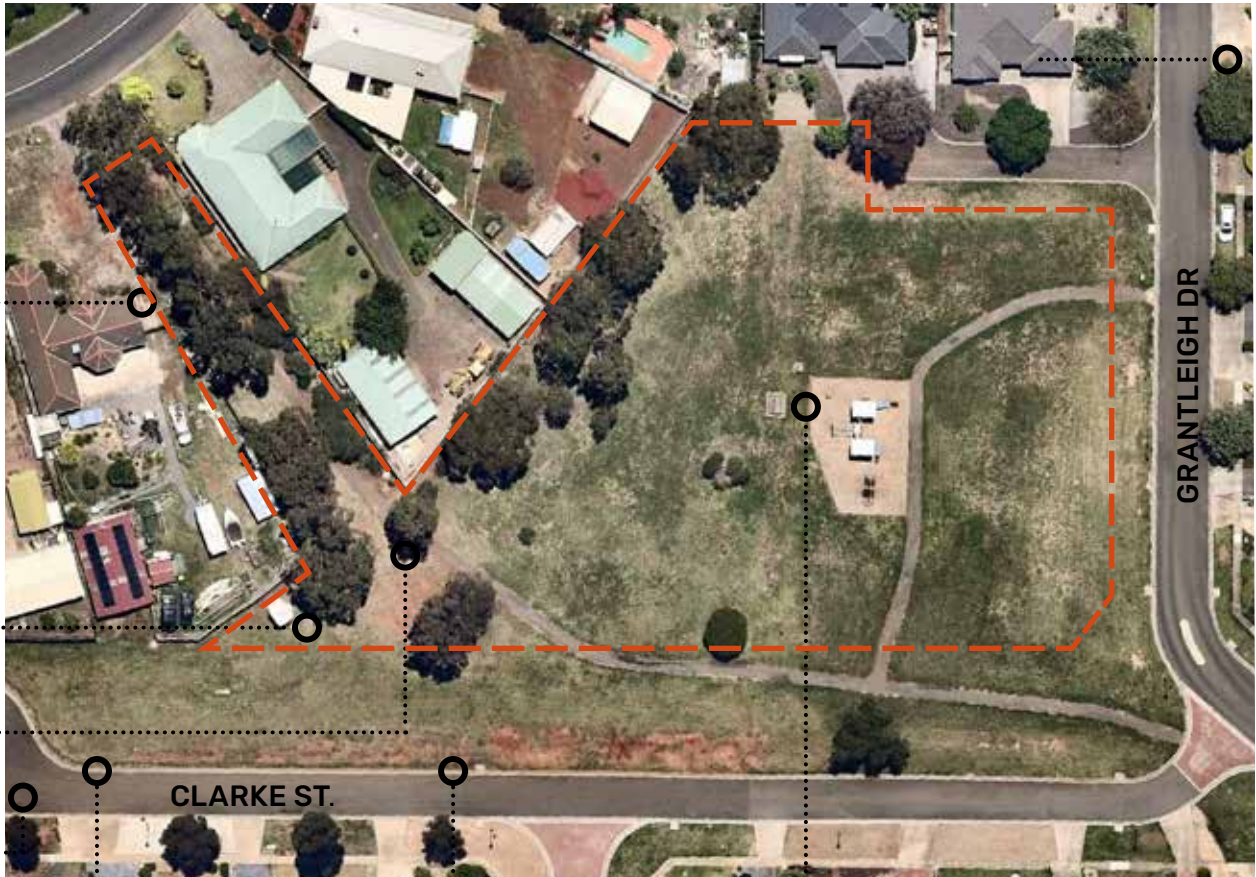
Eucalypts along the western boundary. Generally in fair condition and with useful life expectancy.

Paths

Existing path layout and number and location of street crossing points requires further consideration

History

Clarke St comprising the south boundary of the site presumably acknowledges Kenneth Clarke, a significant character in the settlement of the district, and the naming of Bacchus Marsh.



Erosion

Low embankment requires regrassing and exclusion of vehicles.

Passive surveillance

Three boundaries are open, allowing good views into the reserve.

Play Area

A basic 'off the shelf' playground with picnic table and rubbish bin.

OPEN SPACE LINKAGES

Potential future biolink/path linkage

Open space linkages exist along Hallets-ClarkeDouglas-Conn-Riverbend streets potentially linking the Lerderderg Track and uplands to the west with the Lerderderg River.

This link including Clarke/Grantleigh Reserve could become a biolink and off-road pedestrian/cycle link in the future, providing ecological and social benefits.



SITE IMAGES



SITE ANALYSIS

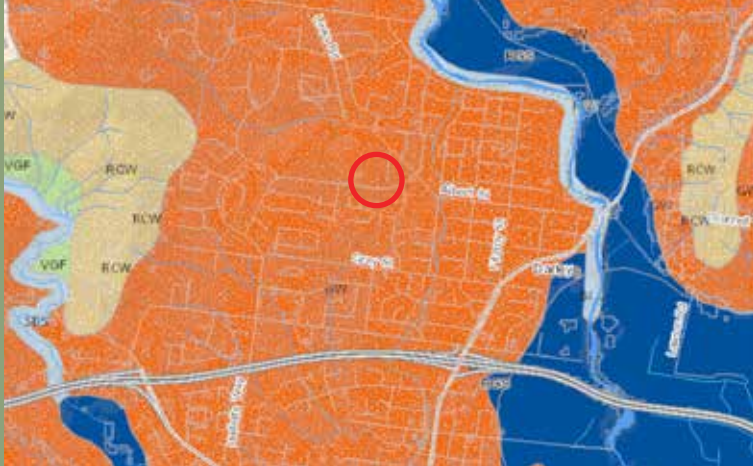
CLARKE/GRANTLEIGH ST RESERVE  
Darley

ECOLOGICAL CONTEXT

Pre-1750 Vegetation

The original vegetation on the site prior to colonisation was Grassy Woodland (EVC 175), a widespread vegetation type across the western plains of Victoria, of which very little is left due to the impact of agriculture and urbanisation

It is characterised by widely-spaced large trees, a sparse shrub layer and a rich understory of grasses and herbs.



Pre-1750 Ecological Vegetation Class mapping

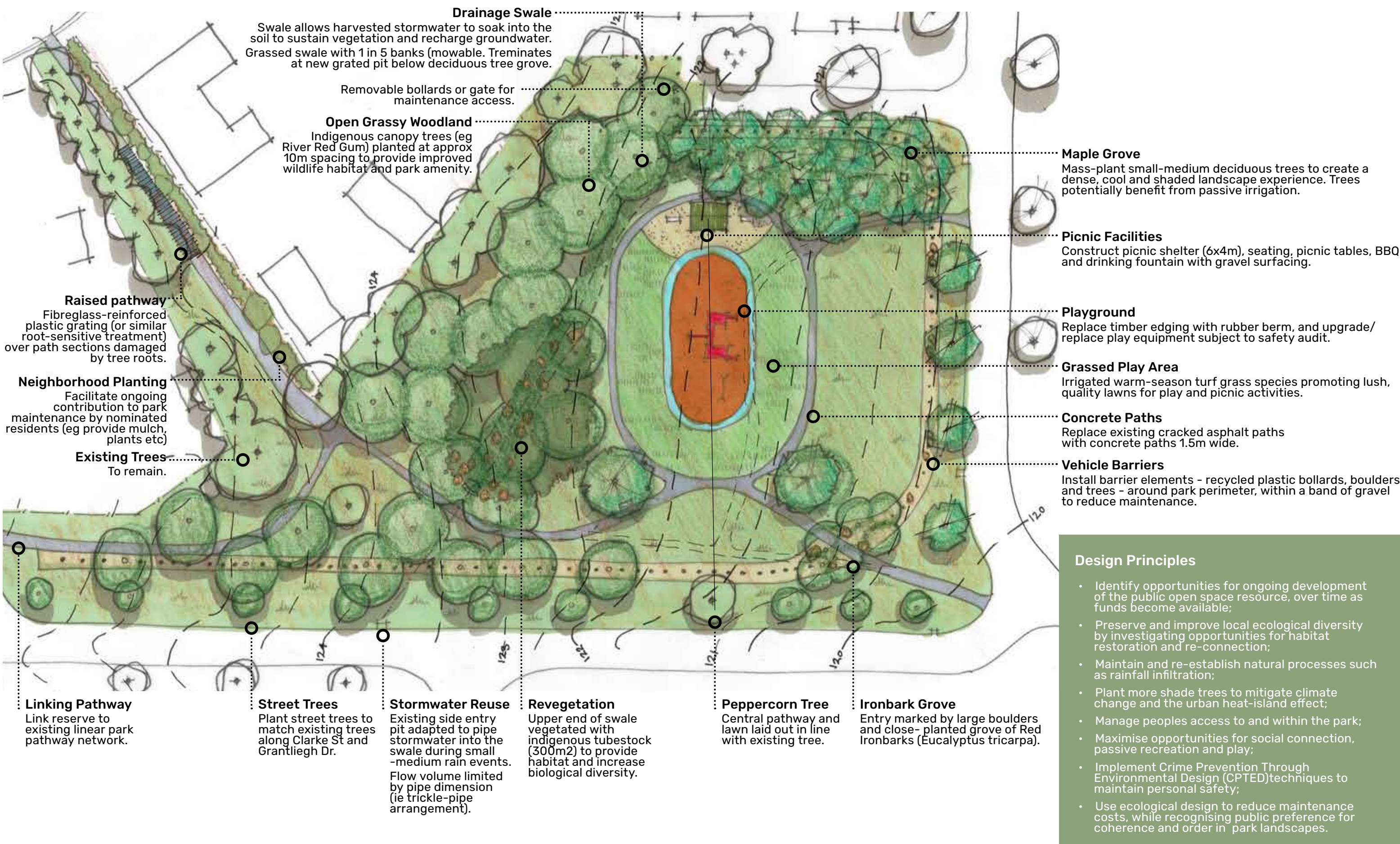
Existing Remnant Vegetation

The area has been cleared for many years for agriculture, and there is very little remnant vegetation in the area.



Current remnant vegetation mapping

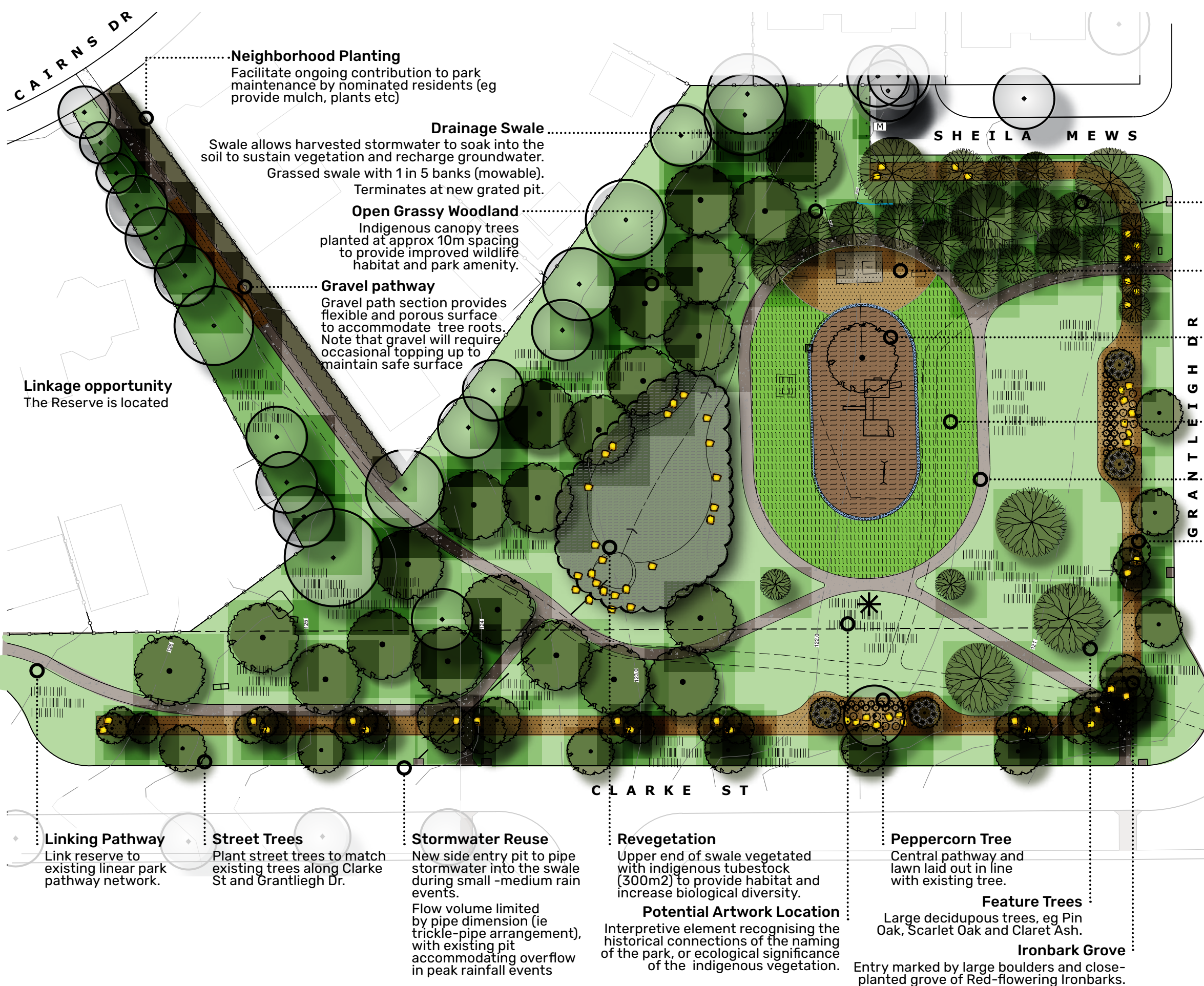




## SKETCH DESIGN

### CLARKE/GRANTLEIGH ST RESERVE Darley





### Placemaking opportunity

Consider clarifying the name of the reserve to reflect the connection with Kenneth Scobie Clarke (c. 1806–79) credited as one of the first white men in the district, who had a cottage nearby, eg Kenneth Clarke Park. Clarke's significance in the early history of the district could be indicated through interpretive artwork and theming of the playground or shelter. Potentially funding could be sought as part of the Sequicentennial of the Moorabool Shire.

### Maple Grove

Mass-plant small-medium Maple trees to create a dense, cool and shaded landscape experience, benefiting from passive irrigation.

### Picnic Facilities

Construct picnic shelter (6x4m), seating, picnic tables, BBQ and drinking fountain with gravel surfacing.

### Playground

Replace timber edging with concrete or bluestone blockwork, and upgrade/replace play equipment subject to safety audit. Playground shaded by large evergreen tree, eg Moretpon Bay Fig

### Grassed Play Area

Irrigated warm-season turf grass species promoting lush, quality lawns for play and picnic activities.

### Concrete Paths

Replace existing cracked asphalt paths with concrete paths 1.5m wide.

### Vehicle Barriers

Install barrier elements - recycled plastic bollards, boulders and trees - around park perimeter, within a band of gravel to reduce maintenance.

### LEGEND

- Existing tree: To be retained and protected during construction.
- Existing tree: To be removed prior to construction.
- Existing Vegetation: Retain
- Proposed trees (Evergreen, deciduous): Refer Plant Palette
- Proposed Tufting Plants: Refer Details &/or Specifications
- Revegetation area: Wood-mulched and planted with indigenous tubestock
- Concrete path: 75mm pedestrian path, finish to client selection.
- Soft Fall: Impact absorbant play surfacing to Australian Standards
- Existing or Proposed Grass Lawn: Turfed or seeded to client selection, refer notes. Reinstate existing grass naturestrip to existing condition.
- Grass lawn (turf)
- Gravel surface: Crushed rock, eg granite, basalt, limestone or recycled crushed concrete, compacted to 75mm depth.
- Concrete kerb: playground edging 500W 200H
- Bollards: Recycled plastic bollards, at 1600cts to exclude vehicles
- Existing fence: To be retained
- Proposed grassed swale. 4.0m wide table drain provides passive irrigation from adjacent road surfaces.
- Maintenance access: Lockable gate or removable bollards to MSC standards.
- Sculpture: Future potential sculpture or artwork location, subject to funding.

# CONCEPT LANDSCAPE PLAN

## CLARKE/GRANTLEIGH ST RESERVE Darley



DRAWING #: 2034 LMP03  
REV A  
DATE: Dec 2020  
SCALE 1:500 @ A3



Concept set



PLANTING PALETTE - ORNAMENTAL

CODE	BOTANICAL NAME	COMMON NAME	H X W (m)	INSTALLATION SIZE
EVERGREEN TREES				
	Acacia dealbata	Silver Wattle	6-30 x 5-10	200mm pot
	Acacia meamsii	Black Wattle	8-25 x 6-10	200mm pot
	Acacia melanoxylon	Blackwood	8-20 x 4-10	200mm pot
	Acacia pendula	Silver Myall	6-8 x 4-6	300mm pot, 1.5m high
	Acacia pycnantha	Golden Wattle	3-8 x 2-5	200mm pot
	Allocasuarina littoralis	Black Sheoke	4-8 x 2-5	300mm pot, 1.5m high
	Brachychiton populneus 'Jerilderie Red'	Black Kurrajong	8 x 7	300mm pot, 1.5m high
	Eucalyptus leucoxylon ssp connata	Melbourne Yellow Gum	10-20 x 6-20	300mm pot, 1.2m high
	Eucalyptus melliodora	Yellow Box	10-15 x 8-10	300mm pot, 1.2m high
	Eucalyptus sideroxylon 'Rosea'	Red-flowering Ironbark	15 x 6-10	300mm pot, 1.5m high
	Eucalyptus viminalis ssp. cygnetensis	Rough-barked Manna Gum	10-18 x 5-10	200mm pot
	Eucalyptus ovata var ovata	Swamp Gum	15-25 x 10-18	200mm pot
DECIDUOUS TREES				
	Acer buergerianum	Trident Maple	6 x 6	45ltr, 1.5m high min
	Acer freemannii 'Jeffersred/Autumn Blaze'	Autumn Blaze Maple	13 x 10	45ltr, 2.0m high min
	Acer negundo 'Sensation'	Sensation Box Elder Maple	9 x 6	45ltr, 1.5m high min
	Acer platanoides 'Columnare'	Norway Maple	10 x 4	1.5m high
	Acer rubrum 'Autumn Red'	Autumn Red Maple	13 x 9	45ltr, 1.5m high min
	Acer rubrum 'Bowhall'	Bowhall Red Maple	10 x 5	45ltr, 1.5m high min
	Acer rubrum 'October Glory'	October Glory Maple	12 x 9	45ltr, 1.5m high min
	Fraxinus oxycarpa 'Raywood'	Claret Ash	12 x 7	45ltr, 1.5m high min
	Quercus coccinea	Scarlet Oak	12-20 x 8-15	45ltr, 1.5m high min
	Quercus palustris	Pin Oak	15-18 x 8-10	45ltr / 2.5m high
	Quercus robur f. fastigiata	Fastigate Oak	13 x 4	100 litre, 2.5m
SHRUBS & TUFTING PLANTS				
	Banksia blechnifolia	Femleaf Banksia	0.4 x 1.0	140mm pot
	Dianella caerulea 'Breeze'	Blue Flax Lily	0.6-0.7x0.6-0.7	140mm pot
	Limonium perezii	Perennial Statice	0.4 x 0.3	140mm pot
	Lomandra longifolia 'Tanika'	Tanika	0.5-0.6 x 0.65	140mm pot
	Westringia fruticosa 'Mundi'	Prostrate Native Rosemary	0.4 x 1.5	140mm pot

PLANTING PALETTE - REVEGETATION`

Based on Bacchus Marsh Native Plant List

BOTANICAL NAME	COMMON NAME	H (m)	W (m)
EVERGREEN TREES			
Acacia implexa	Lightwood	8-15m	4-6m
Acacia pycnantha	Golden Wattle	3-6m	2-4m
Bursaria spinosa subsp. spinosa	Sweet Bursaria	3-6m	2-4m
Eucalyptus camaldulensis	River red gum	>15m	>6m
SHRUBS			
Acacia paradoxa	Hedge Wattle	3-6m	1-2m
Acacia verniciflua (Bacchus Marsh Variant)	Varnish Wattle	1-3m	1-2m
Cassinia arcuata	Drooping Cassinia	1-3m	1-2m
Leptospermum continentale	Prickly Tea- Tree	3-6m	1-2m
Ozothamnus ferrugineus	Tree Everlasting	3-6m	2-4m
Pultenaea pedunculata	Matted Bush-Pea	<1m	2-4m
Sclerolaena muricata var.	Black Roly Poly	<1m	<1m
GROUNDCOVERS			
Calocephalus citreus	Lemon Beauty- heads	<1m	<1m
Calocephalus lacteus	Milky Beauty- Heads	<1m	<1m
Chrysocephalum apiculatum s.l.	Common Everlasting	<1m	1-2m
TUFTING PLANTS			
Austrostipa semibarbata	Fibrous Spear-grass	<1m	<1m
Carex appressa	Tall Sedge	<1m	<1m
Ficinia nodosa	Knobby Club-Sedge	1-3m	1-2m
Lomandra longifolia	Spiny-headed Mat-rush	<1m	1-2m
Microlaena stipoides var.	Weeping Grass	<1m	<1m
Phragmites australis	Common Reed	1-3m	<1m
Poa labillardierei	Common Tussock- grass	<1m	<1m
Themeda triandra	Kangaroo Grass	<1m	<1m

Deciduous trees



SensationBox Elder Maple - Acer negundo 'Sensation'



Bowhall Red Maple - Acer rubrum 'Bowhall'



Norway Maple - Acer platanoides 'Columnare'

Native Trees



Black Sheoke - Allocasuarina littoralis



Black Kurrajong - Brachychiton populneus 'Jeriderie Red'



Silver Myall - Acacia pendula



Red-flowering Ironbark - Euclayptus sideroxylon 'Rosea'

Shrubs and Tufting Plants



Indigenous Trees



Blackwood - Acacia melanoxylon



Melbourne Gum - Eucalyptus leucoxylon ssp connata



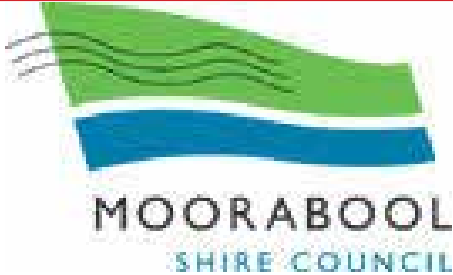
Black Wattle - Acacia mearnsii



Golden Wattle - Acacia pycnantha

PLANT MATERIALS

CLARKE/GRANTLEIGH ST RESERVE  
Darley



DRAWING #: 2034 LMP04

REV A

DATE: Apr 2021

SCALE NTS



Perry Mills  
& Associates  
Landscape Architecture  
www.perrymills.com.au

Concept set



Paving



Perimeter landscape bed - Bollards within planted garden bed.



Grassed swale - directs stormwater from street to water trees



Central grass play area - Village Green kikuyu

Furniture



Picnic setting - Furphy Metro style



Bench seat with arms - Furphy Metro style



Playground - Existing



Perimeter bollards - Recycled plastic, black, eg Brolga by Replas



Litter receptacle - Furphy Avenue style



Trowel-finish concrete - General paths



Locally sourced gravel (eg Sago Hill) - Garden beds & paths



Locally sourced landscape rock - Garden beds

Shelter



Picnic shelter - eg Landmark 6x4m K653 Cantilever Shelter



Timber cladding to steel columns

MATERIALS

CLARKE/GRANTLEIGH ST RESERVE  
Darley



DRAWING #: 2034 LMP05  
REV A  
DATE: APRIL 2021  
SCALE nts



Concept set