

HINES COURT RESERVE

Hines Court,
Darley,
Wurundgeri Country

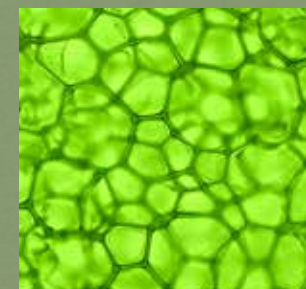
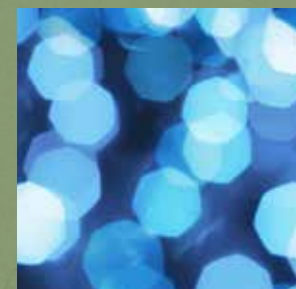
MOORABOOL SHIRE COUNCIL



Landscape Concept Plan



Perry Mills & Associates Landscape Architects



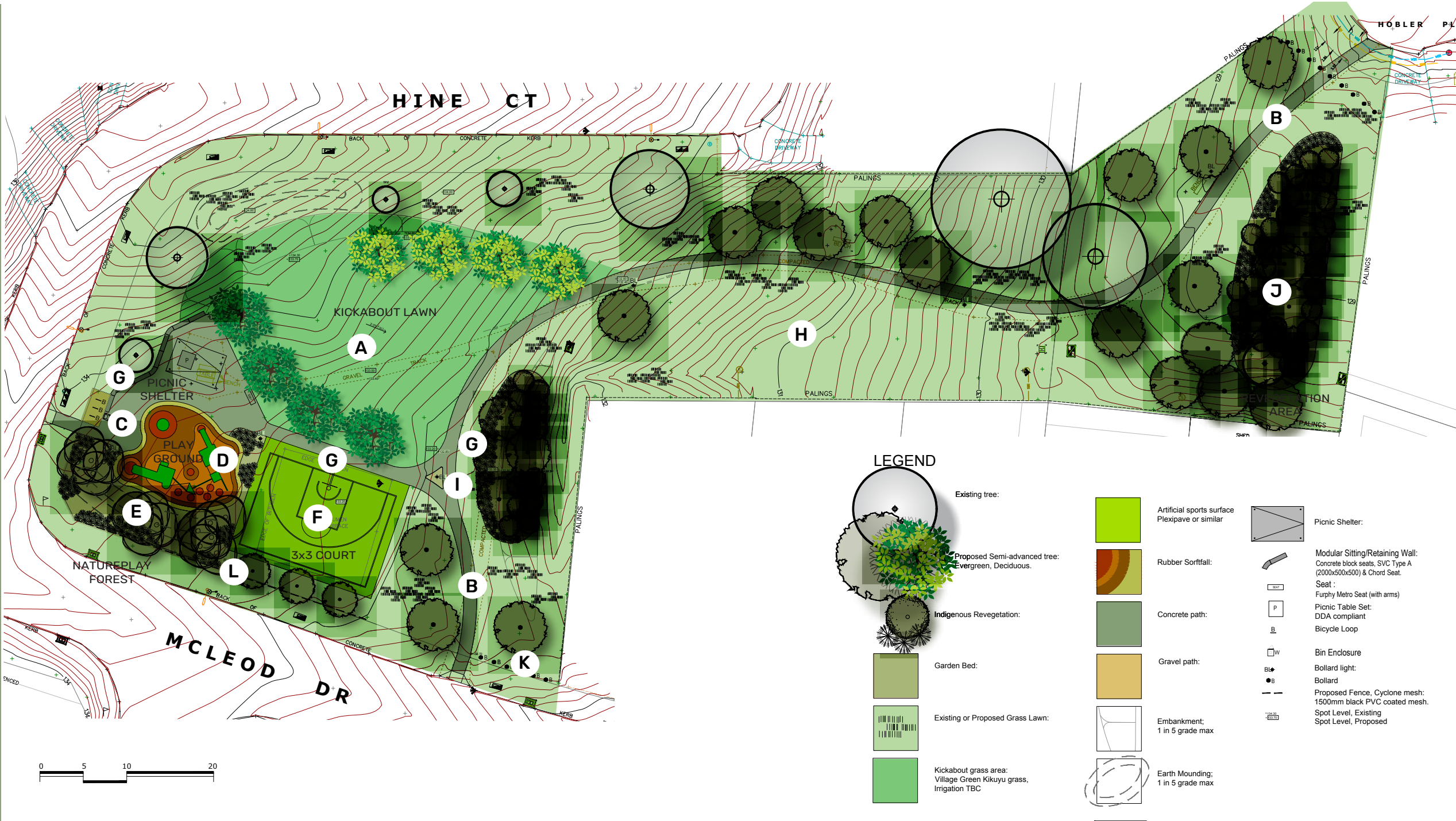
Design Principles

This project seeks to:

- Improve accessibility and encourage a walking and cycling by extending and upgrading pathways;
- Retain existing trees and re-establish natural habitat by planting mainly indigenous plants, helping to link remnant vegetation areas together;
- Provide passive and active recreation opportunities typical of a 'Neighborhood Park', with options for all ages and abilities;
- Maintain the function of the reserve as a drainage corridor, and retain access for potential future drainage infrastructure.

Features

- A** Undertake earthworks to create a flat area for active play and gentle mounding, with quality grass surface (Kikuyu grass).
- B** Concrete paths 1.5m wide.
- C** Facilities node with picnic shelter 6x4m with picnic table, rubbish bin, bicycle loops and low-level lighting (bollards).
- D** Playground with rubber safety surfacing and play elements suitable for ages 2-12 years including a combination play unit and a wheelchair accessible carousel.
- E** Mounded natureplay forest of densely planted Willow Bottlebrush (*Callistemon salignus*), featuring papery white-barked trunks, and with log, boulders and other natural play elements along a path.
- F** Existing asphalt area to be resurfaced with artificial sports surfacing and linemarked for 3x3 basketball.
- G** Seats provided along pathway to take advantage of views of the site, play areas and trees.
- H** Area undeveloped to provide for potential future drainage infrastructure.
- I** Low-level bollard lighting to be provided along main pathway.
- J** Indigenous revegetation to provide habitat diversity.
- K** Maintenance access point.
- L** 900mm high cyclone mesh fence adjacent the 3x3 court and play area.



Mounding & earthworks (1 in 5 grade)



ASCO C1000 shelter



Combination play unit (Adv+ Wingate S5286U)



Natureplay forest walk

CONCEPT PLAN

HINE COURT RESERVE
Darley

Wurundgeri Country



DRAWING #:
2312 LC01

REV
B



DATE:
20/10/23

SCALE
1:250@A1





Combination play unit (Adv+ Wingate S5286U)



Galaxy Carousel 0740C)



SCA Bin Enc, LR6225



Slats available in:
Hardwood Timber (FFSA002001)
Aluminium (FFSA002001A)



Slats available in:
Hardwood Timber (FFSA004002)
Aluminium (FFSA004002A)

Furphy Metro Seat & Picnic set



Block Seat/wall (SVC)



Boundary fence

Existing Spotted Gum
Tree to be protected and retained.

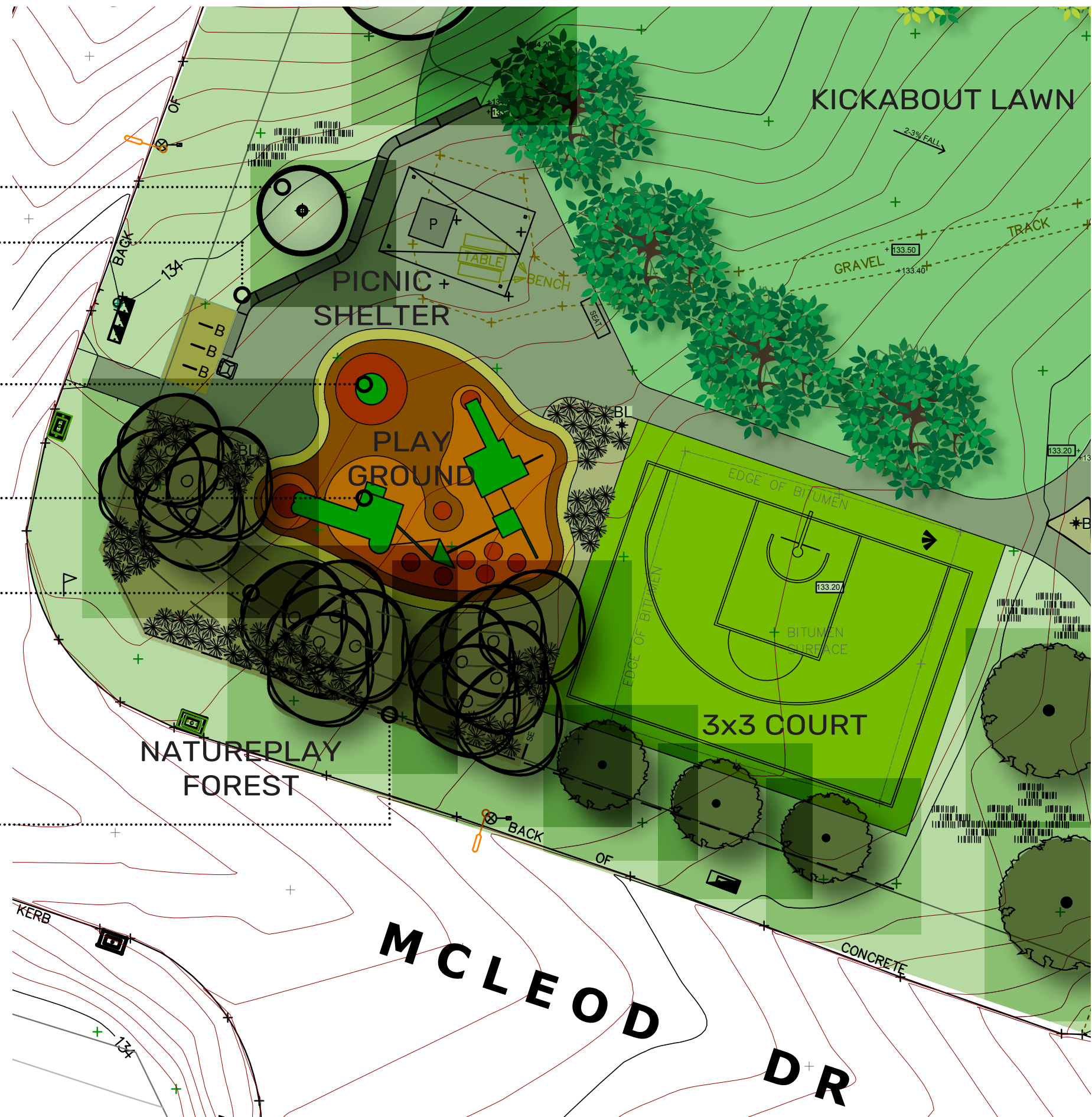
Sitting Wall
Prefabricated concrete block sitting wall retains the slope and provides informal seating.

Carousel
Galaxy Wheelchair Carousel (Adventure Plus 0740C)

Combination Unit
Wingate Play Unit (Adventure Plus S5286U)

Natureplay Forest
Densely planted small trees and mounding creates natural shelter and spatial separation from road. Trees planted in groups to maintain visibility and safety. Lower branches to be removed as they mature to maintain visibility and to enhance character of the paperbark trunks.

Boundary Fencing
Chainwire mesh fence 1500mm high with black PVC netting and black powdercoated posts along McLeod Dr boundary.



CONCEPT PLAN - DETAIL & MATERIALS

HINE COURT RESERVE
Darley

Wurundgeri Country



DRAWING #:
2312 LC02

REV
B



DATE:
20/10/23

SCALE
1:100@A1



Perry Mills
& Associates
Landscape Architecture
www.perrymills.com.au

PLANTING PALETTE

CODE	BOTANICAL NAME	COMMON NAME	H X W (m)
EVERGREEN TREES			
	Acacia implexa	Lightwood	6-8 x 4-7
	Acacia maidenii	Maiden's Wattle	10-15 x 10-15
	Banksia marginata (tree form)	Silver Banksia	5-8 x 1-3
	Callistemon salignus (Melaleuca salicina)	Willow Bottlebrush	7 x 5
	Eucalyptus microcarpa	Grey Box	25 x 15
	Eucalyptus melliodora	Yellow Box	10-15 x 8-10
DECIDUOUS TREES			
	Acer rubrum 'October Glory'	October Glory Maple	12 x 9
	Acer platanoides 'Columnare'	Norway Maple	10 x 4
	Fraxinus pennsylvanica 'Cimmzam' / 'Cimmaron'	Green Ash	13 x 8
	Ulmus 'Sapporo Autumn Gold'	Sapporo Autumn Gold Elm	10-15 x 6-10
GROUNDCOVERS			
	Banksia repens	Creeping Banksia	0.2-0.3 x 2-3
	Brachyscome multifida	Cut-leaf Daisy	0.3 x 0.6
	Eremophila glabra 'Kalbarri Carpet'	Dwarf Emu Bush	0.1-0.2 x 1-2
	Grevillea preissii 'Sea Spray'	Spider-net Grevillea	0.5 x 2.0
	Limonium perezii	Perennial Statice	0.4 x 0.3
	Westringia fruticosa 'Mundi'	Prostrate Native Rosemary	0.4 x 1.5
TUFTING PLANTS			
	Dianella longifolia	Pale Flax-lily	0.5-1.0 x 0.5-1.0
	Lomandra longifolia	Spiny-headed Mat Rush	0.8-1.5 x 1.0
	Lomandra longifolia 'Tanika'	Tanika	0.5-0.6 x 0.65

Deciduous trees



SensationBox Elder Maple - Acer negundo 'Sensation'



Norway Maple - Acer platanoides 'Columnare'

Native Trees



Willow Bottlebrush - Callistemon salignus (syn Melaleuca salicina)

PLANTING PALETTE - REVEGETATION

Based on Bacchus Marsh Native Plant List

BOTANICAL NAME	COMMON NAME	H (m)	W (m)
EVERGREEN TREES			
Acacia implexa	Lightwood	8-15m	4-6m
Acacia pycnantha	Golden Wattle	3-6m	2-4m
Bursaria spinosa subsp. spinosa	Sweet Bursaria	3-6m	2-4m
Eucalyptus camaldulensis	River red gum	>15m	>6m
Eucalyptus microcarpa	Grey Box	25m	15m
Eucalyptus melliodora	Yellow Box	10-15m	8-10m
Eucalyptus viminalis ssp. cygnetensis	Rough-barked Manna Gum	10-18m	8-10m
SHRUBS			
Acacia paradoxa	Hedge Wattle	3-6m	1-2m
Acacia verniciflua (Bacchus Marsh Variant)	Varnish Wattle	1-3m	1-2m
Cassinia arcuata	Drooping Cassinia	1-3m	1-2m
Leptospermum continentale	Prickly Tea- Tree	3-6m	1-2m
Ozothamnus ferrugineus	Tree Everlasting	3-6m	2-4m
Pultenaea pedunculata	Matted Bush-Pea	<1m	2-4m
GROUNDCOVERS			
Calocephalus citreus	Lemon Beauty- heads	<1m	<1m
Calocephalus lacteus	Milky Beauty- Heads	<1m	<1m
Chrysocephalum apiculatum s.l.	Common Everlasting	<1m	1-2m
TUFTING PLANTS			
Austrostipa semibarbata	Fibrous Spear-grass	<1m	<1m
Carex appressa	Tall Sedge	<1m	<1m
Ficinia nodosa	Knobby Club-Sedge	1-3m	1-2m
Lomandra longifolia	Spiny-headed Mat-rush	<1m	1-2m
Microlaena stipoides var.	Weeping Grass	<1m	<1m
Phragmites australis	Common Reed	1-3m	<1m
Poa labillardierei	Common Tussock- grass	<1m	<1m
Themeda triandra	Kangaroo Grass	<1m	<1m

Indigenous Trees



Lightwood - Acacia implexa



Grey Box - Eucalyptus microcarpa



Silver Banksia - Banksia marginata



Golden Wattle - Acacia pycnantha

Groundcovers and Tufting Plants



CONCEPT PLAN - PLANT MATERIALS

HINE COURT RESERVE
Darley

Wurundgeri Country



DRAWING #:
2312 LC03

REV
B



DATE:
20/10/23

SCALE
NTS

